

# DELAWARE REEF GUIDE

*IF YOU BUILD IT*

2009-2010

*THEY WILL COME*



**Delaware's Artificial Reef Program is funded under the Federal Aid in Fisheries Restoration Act by the Delaware Division of Fish and Wildlife**

### **ABOUT THE COVER**

**The tugs “Fels Point”, “Cittie Point” and “W.C. Snow” are photographed in tow to their final resting place on site #11 June 2, 2008. The Dominion Marine Group tug “American” was the platform for the photographer.**

### **ABOUT THE REEF GUIDE**

Welcome to the 2009-2010 “Recession Edition” of the Delaware Reef Guide, printed in black and white to conserve funding for reef development activities. 2010 is expected to be a good year for the Reef Program. The Navy has awarded the retired destroyer, Arthur W. Radford to the Delaware, New Jersey and Maryland Reef Program for a cooperative effort to sink it on a Delaware permitted reef site. We expect to select a contractor and resume the deployment of concrete materials on Delaware Bays sites. A “new” reef site near Augustine Beach is expected to receive its first reef Materials and New York city subways cars continue to be deployed on ocean sites.

Enjoy fishing Delaware’s Reefs!

## **THE DELAWARE REEF PROGRAM**

Delaware has fourteen permitted artificial reef sites in Delaware Bay and along the Atlantic Coast. Development of these sites began in 1995 and will continue in the future. The Delaware Reef Program is one part of a comprehensive fisheries management effort and is designed to enhance fisheries habitat, benefit structure-oriented fish and provide fishing opportunities for anglers

Reef construction is especially important in the Mid-Atlantic Region, where near shore bottom is usually featureless sand or mud. We have neither the natural rocky outcrops common in New England nor the coral reefs of our Southeastern Atlantic Coast. Durable, stable, non-toxic reef materials can develop an invertebrate community which is hundreds of times richer than adjacent bottom, providing food and physical protection for reef fish such as tautog, sea bass, scup, spadefish and triggerfish. In addition, game fish such as flounder, bluefish, striped bass, weakfish, tunas and sharks are attracted to baitfish, which congregate around reef structure.

Recycled materials have supported reef development efforts to date. Donated concrete culvert pipe and other concrete products are the primary materials used at the eight Delaware Bay sites. Ballasted tire units have been deployed at the three ocean sites. To date, over 74,000 tons of concrete products, 9,000 tons of ballasted tire units and 86 decommissioned military vehicles. Retired vessels have become an important part of the Reef Program in recent years with 17 vessels from 40-180' sunk on 7 reef sites. An additional three vessels and six barges are under contract for sinking in 2009.

The reef program uses DGPS (Differential Global Positioning System) to accurately place materials on site. The site charts in the reef guide show where reef materials have been deployed from 1995—2005. Locations (latitude—longitude) noted for each site indicate the position of deployments of reef material from an anchored barge. In the case of large, concentrated reef deployments, a latitude or longitude range, may be given such as: N 39<sup>0</sup> 15.377' - 402'. This indicates material occurs between 39 degrees, 15.377 to 15.402 minutes north latitude. Due to variability between DGPS receivers, slight variation in readings may occur. It is suggested you use your GPS and a good fathometer to locate reef structure, then note the coordinates on your own GPS.

### **ENJOY FISHING DELAWARE'S REEFS**

#### **Key to Reading the Reef Charts.**

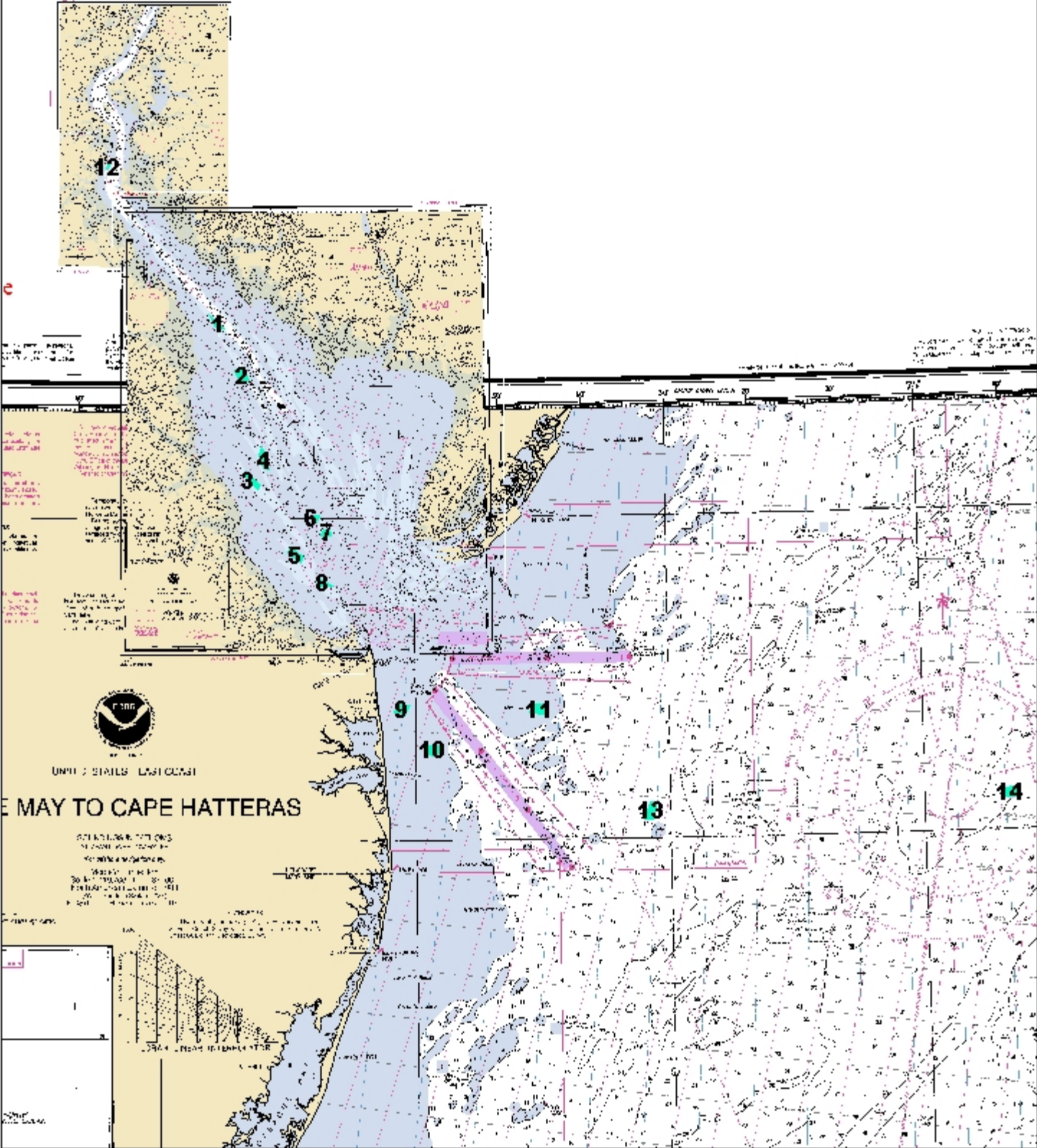


**= Reef material plotted from periodic sidescan sonar surveys**



**= Position of reef material on deployments made since the last sidescan survey of the site.**

# GENERAL LOCATION OF DELAWARE'S FOURTEEN PERMITTED ARTIFICIAL REEF SITES



### Site #1

Total area of site	-	0.41 square nautical miles
Depth range	-	17-30' (mean low water)
Distance from port	-	5.2 nautical miles from Port Mahon
Invertebrate Colonization	-	oyster, barnacle, hydroid community
Fish	-	sea bass plus pelagic species (weakfish, striped bass)

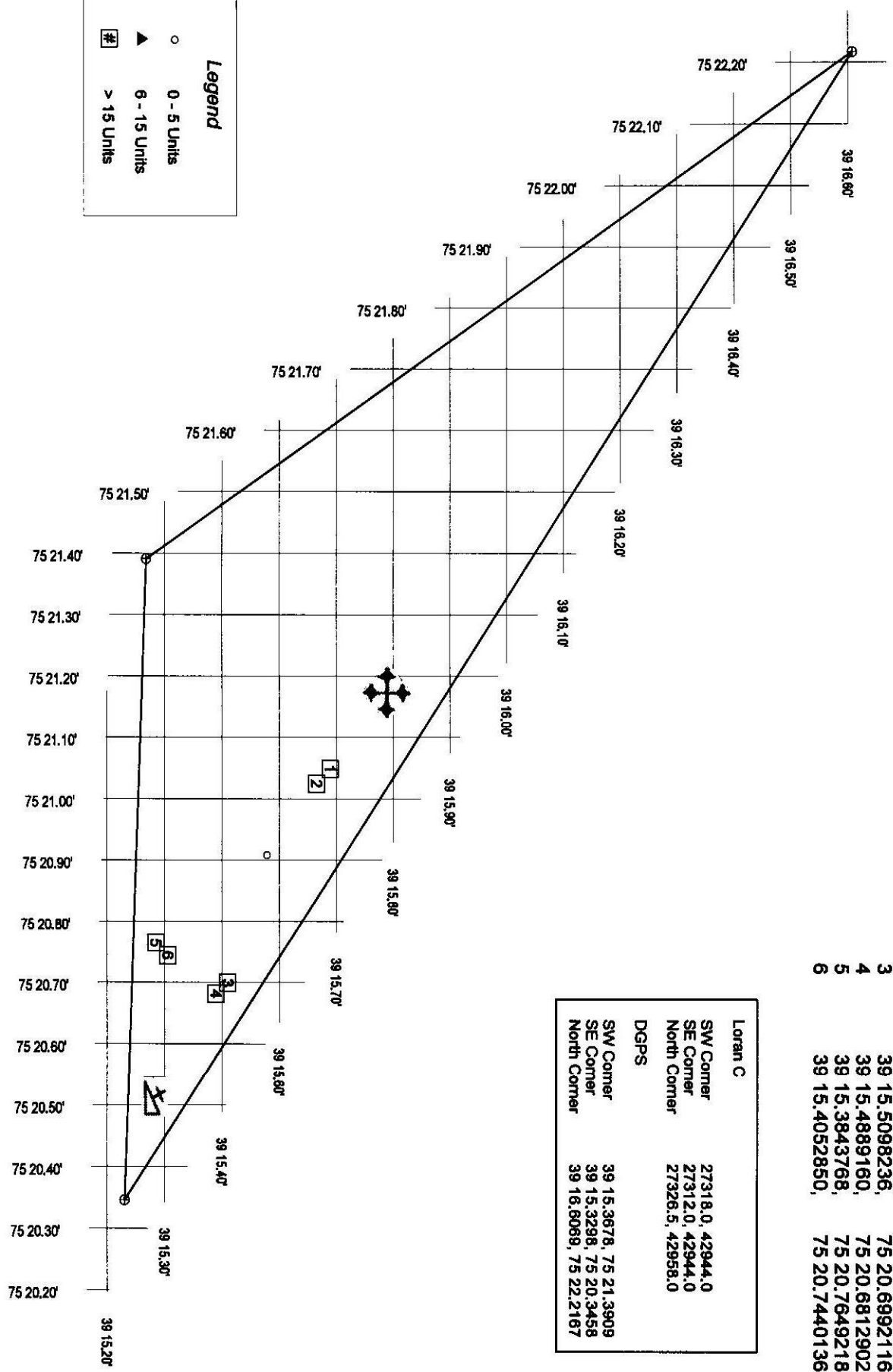
### Deployments

1. 500 tons of concrete culvert deployed from an anchored barge 3/28/96. Depth about 30'.  
N 39° 15.559'  
W 075° 20.689'
2. 500 tons of concrete culvert deployed from an anchored barge 9/15/98. Depth about 29'.  
N 39° 15.377' - .402'  
W 075° 20.750' - .777'
3. 1,690 tons of concrete culvert deployed from an anchored barge 1/09/03.  
N 39° 15.685'  
W 075° 21.032'
4. 782 tons of concrete culvert deployed from an anchored barge 7/3/04.  
N 39° 15.685'  
W 075° 21.032'
5. 1,582 tons of concrete culvert deployed from and anchored barge 7/10/04.  
N 39° 15.788'  
W 075° 21.177'
6. 40' steel hull pilot boat  
N 39° 15.519'  
W 075° 20.753'

---

### Notes

# Delaware Artificial Reef Site 1 Material Distribution



ID	Latitude,	Longitude
1	39 15.6890328,	75 21.0486696
2	39 15.6651384,	75 21.0247752
3	39 15.5098236,	75 20.6992116
4	39 15.4889160,	75 20.6812902
5	39 15.3843768,	75 20.7649218
6	39 15.4052850,	75 20.7440136

Loran C	
SW Corner	27318.0, 42944.0
SE Corner	27312.0, 42944.0
North Corner	27326.5, 42958.0
DGPS	
SW Corner	39 15.3678, 75 21.3909
SE Corner	39 15.3298, 75 20.3458
North Corner	39 16.8089, 75 22.2167

## Site #2

Total are of site	-	0.71 square nautical miles
Depth range	-	16-28' (mean low water)
Distance from port	-	3.8 nautical miles from Port Mahon
Invertebrate Colonization	-	oyster, barnacle, hydroid community
Fish	-	sea bass plus pelagic species (weakfish, striped bass)

## Deployments

1. 500 tons of concrete culvert deployed 3/28/96. Depth about 22'.  
N 39° 11.335'  
W 075° 18.379'
2. 500 tons of concrete culvert deployed 9/15/98. Depth 26'.  
N 39° 11.038'  
W 075° 18.033'
3. 886 tons of concrete culvert deployed 6/20/00. Depth 28.5'.  
N 39° 10.565 - 70'  
W 075° 17.774 - 86'
4. 1,100 tons of concrete culvert deployed 5/11/02. Depth 28'.  
N 39° 11.265'  
W 075° 18.097'
5. 1,000 tons of concrete culvert deployed 12/23/02. Depth 28'.  
N 39° 11.181'  
W 075° 18.146'
6. 1,610 tons of concrete culvert deployed 11/07/03.  
N 39° 11.426'  
W 075° 18.177'

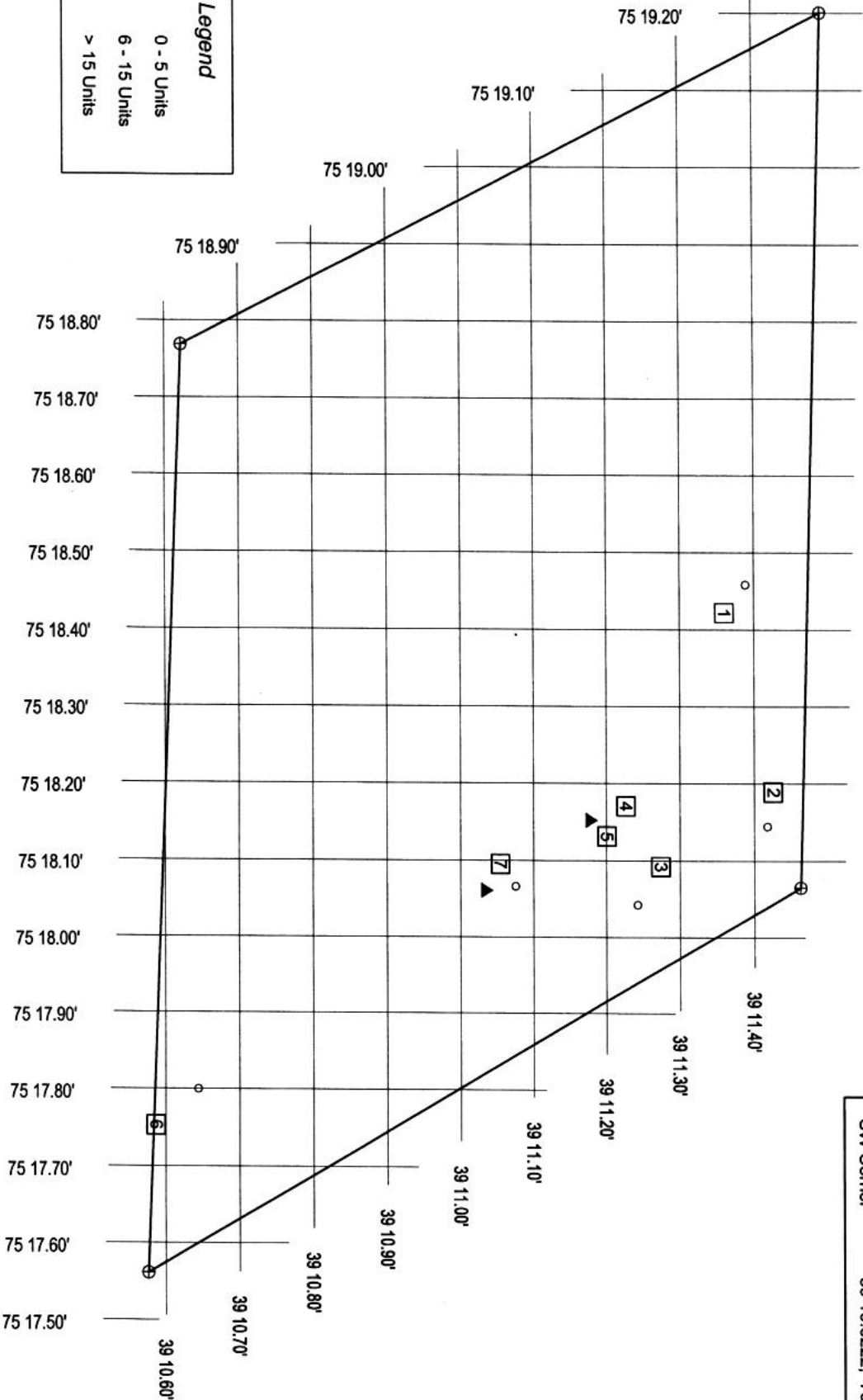
---

## Notes

# Delaware Artificial Reef Site 2 Material Distribution

ID	Latitude,	Longitude
1	39 11.3601486,	75 18.4218708
2	39 11.4254856,	75 18.1892724
3	39 11.2739046,	75 18.0925740
4	39 11.2268616,	75 18.1709778
5	39 11.2007274,	75 18.1317762
6	39 10.5865620,	75 17.7528228
7	39 11.0543730,	75 18.0951876

Loran C	
NW Corner	27294.0, 42900.0
NE Corner	27287.5, 42900.0
SE Corner	27282.0, 42890.0
SW Corner	27289.0, 42890.0
DGPS	
NW Corner	39 11.4938, 75 19.2003
NE Corner	39 11.4623, 75 18.0655
SE Corner	39 10.5760, 75 17.5611
SW Corner	39 10.6222, 75 18.7686



**Legend**

- 0 - 5 Units
- ▲ 6 - 15 Units
- > 15 Units



### Site #3

Total area of site	-	0.68 square nautical miles
Depth range	-	18-28' (mean low water)
Distance from port	-	6.5 nautical miles from Bowers Beach 6.0 nautical miles from Mispillion River
Invertebrate Colonization	-	blue mussel, sulfur sponge community
Fish	-	sea bass, weakfish, striped bass, bluefish

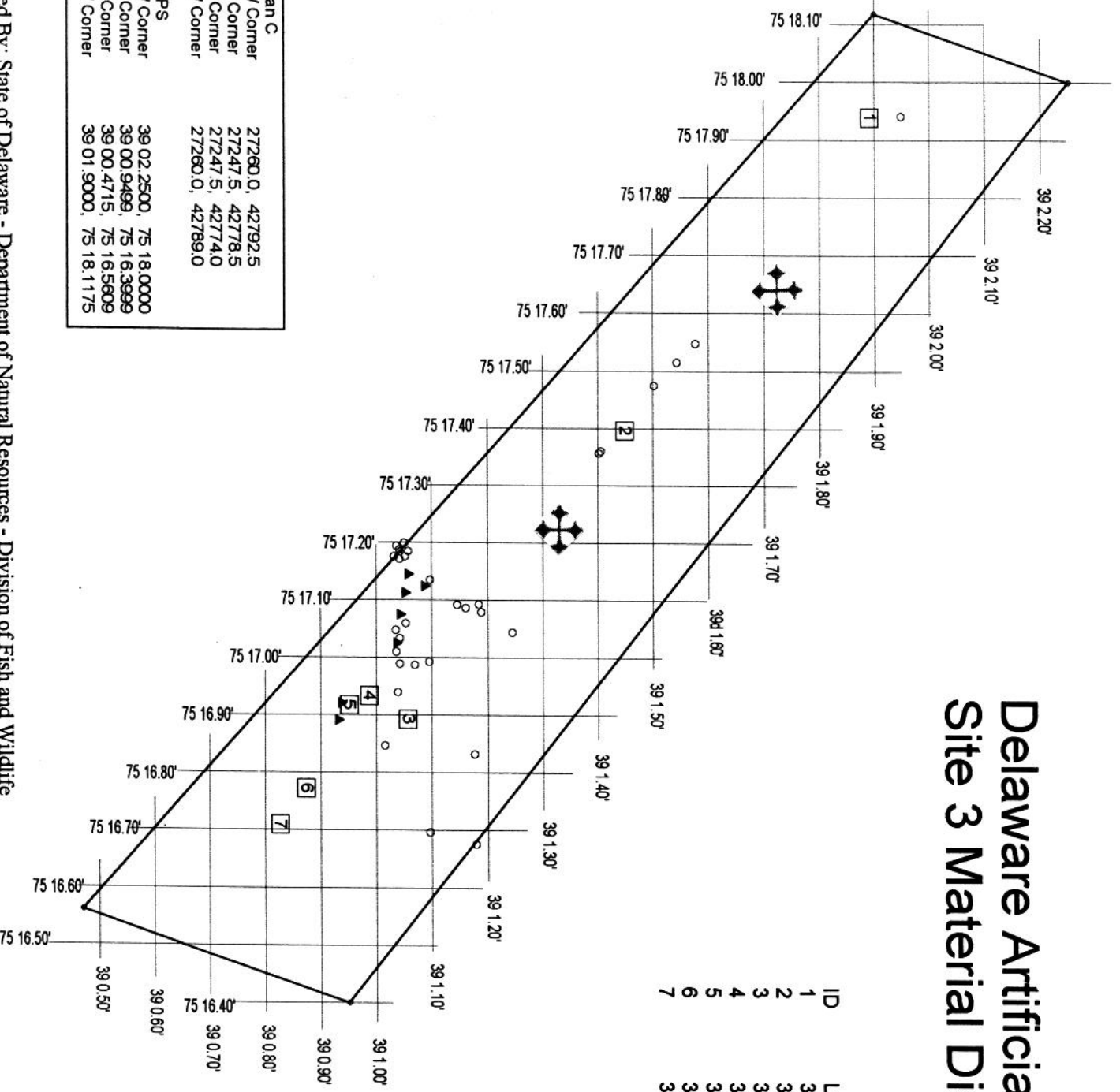
### Deployments

1. 500 tons of concrete culvert deployed 1/15/96.
2. 1,000 tons of concrete culvert deployed from an anchored barge 5/14/97. Water depth about 32'.  
N 39° 01.054' - .087'  
W 075° 16.882' - .895'
3. 807 tons of concrete culvert deployed 6/1/00. Depth 30'.  
N 39° 00.881' - .84'  
W 075° 16.749' - .772'
4. 961 tons of concrete culvert deployed 7/7/00. Depth 34'.  
N 39° 00.928' - .81'  
W 075° 16.914' - .29'
5. 1,300 tons of concrete deployed 7/15 / 01.  
N 39° 01.888'  
W 075° 17.936'
6. 1,000 tons of concrete deployed 6/10/02. Depth 28'.  
N 39° 01.449'  
W 075° 17.395'
7. 1,092 tons of concrete deployed 4/14/03. Depth 26.  
N 39° 01.730'  
W 075° 17.640'
8. 1,590 tons of concrete deployed 3/11/04. Depth 26'.  
N 39° 01.339'  
W 075° 17.242'

---

### Notes

# Delaware Artificial Reef Site 3 Material Distribution



ID	Latitude	Longitude
1	39 01.890,	75 17.938
2	39 01.449,	75 17.395
3	39 01.056,	75 16.892
4	39 00.987,	75 16.933
5	39 00.951,	75 16.917
6	39 00.873,	75 16.772
7	39 00.826,	75 16.709

Loran C	
NW Corner	27260.0, 42792.5
NE Corner	27247.5, 42778.5
SE Corner	27247.5, 42774.0
SW Corner	27260.0, 42789.0

DGPS	
NW Corner	39 02.2500, 75 18.0000
NE Corner	39 00.9499, 75 16.3999
SE Corner	39 00.4715, 75 16.5609
SW Corner	39 01.9000, 75 18.1175

Legend	
○	0 - 5 Units
▲	6 - 15 Units
□	> 15 Units

#### Site #4

Total area of site	-	0.63 square nautical miles
Depth range	-	30-38' (mean low water)
Distance from port	-	6 nautical miles from Bowers Beach 7 nautical miles from Mispillion River
Invertebrate Colonization	-	blue mussel community
Fish	-	sea bass, weakfish, striped bass, tautog

#### Deployments

1. 500 tons of concrete culvert deployed from a moving barge.
2. 900 tons of concrete culvert deployed from an anchored barge on 2/12/97. Depth about 38'.  
N 39° 03.712'  
W 075° 16.051'
3. 1,000 tons of concrete deployed on 10/2/97. Approximate depth 35'.  
N 39° 03.560'  
W 075° 16.070'
4. 1,100 tons of concrete deployed on 3/21/99. Depth 37'.  
N 39° 03.358 – 386'  
W 075° 5.990 – 16.031'
5. 850 tons of concrete deployed on 4/8/99. Depth 42'.  
N 39° 02.621'  
W 075° 15.695'
6. 1,192 tons of concrete deployed 3/28/03. Depth 38.  
N 39° 03.065'  
W 075° 15.724'
7. 1,511 tons of concrete deployed 7/7/04.  
N 39° 02.853'  
W 075° 15.805'
8. 1,407 tons of concrete deployed 11/02/05. Depth 34'.  
N 39° 03.342'  
W 075° 15.743'

---

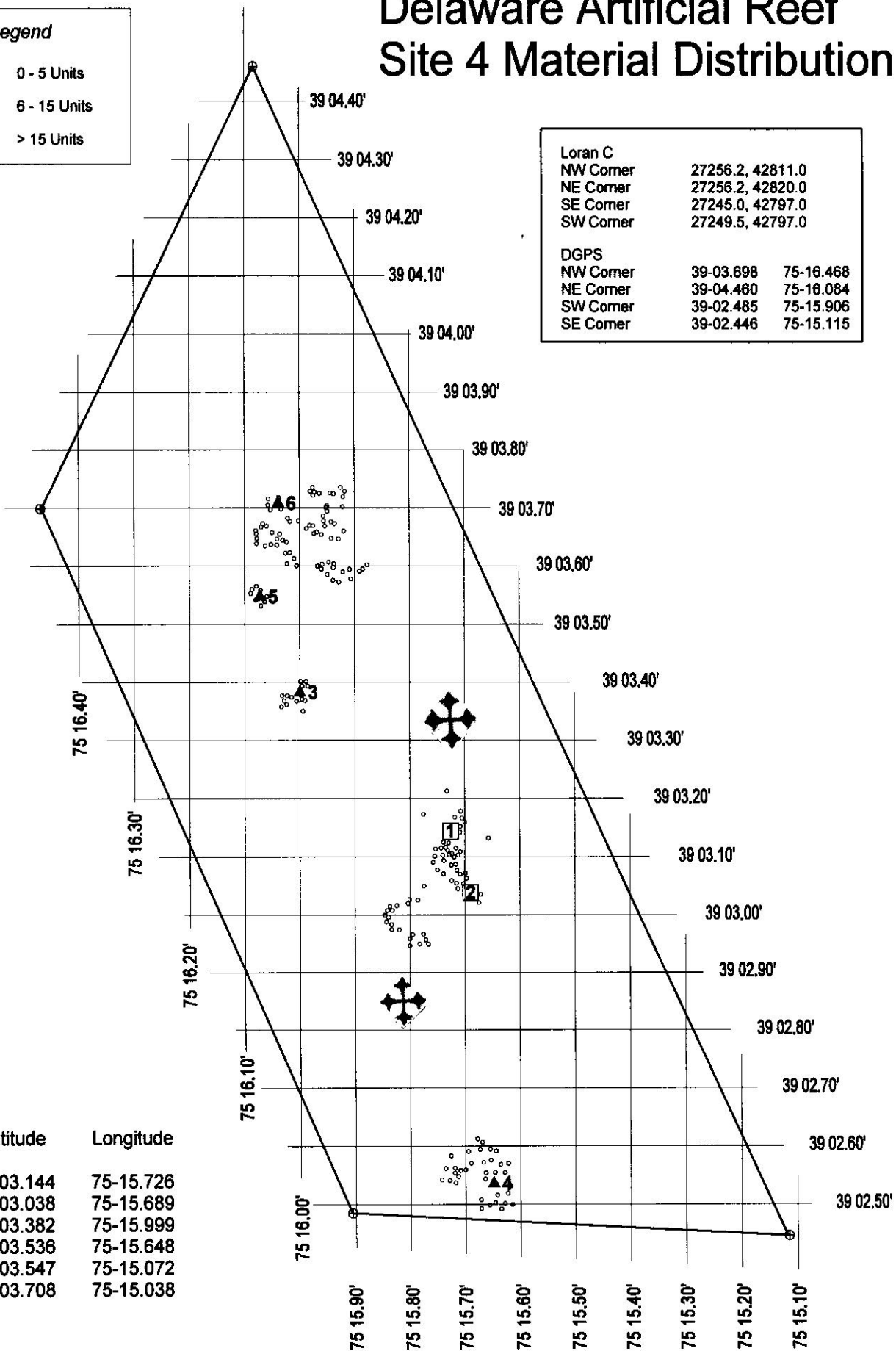
Notes

# Delaware Artificial Reef Site 4 Material Distribution

**Legend**

- 0 - 5 Units
- ▲ 6 - 15 Units
- > 15 Units

Loran C		
NW Corner	27256.2, 42811.0	
NE Corner	27256.2, 42820.0	
SE Corner	27245.0, 42797.0	
SW Corner	27249.5, 42797.0	
DGPS		
NW Corner	39-03.698	75-16.468
NE Corner	39-04.460	75-16.084
SW Corner	39-02.485	75-15.906
SE Corner	39-02.446	75-15.115



ID	Latitude	Longitude
1	39-03.144	75-15.726
2	39-03.038	75-15.689
3	39-03.382	75-15.999
4	39-03.536	75-15.648
5	39-03.547	75-15.072
6	39-03.708	75-15.038

## Site #5

Total area of site	-	0.65 square nautical miles
Depth range	-	18-24' (mean low water)
Distance from port	-	4.5 nautical miles from Mispillion River 8.5 nautical miles from Roosevelt Inlet
Invertebrate Colonization	-	blue mussel, sulfur sponge community
Fish	-	sea bass, tautog, scup, weakfish

## Deployments

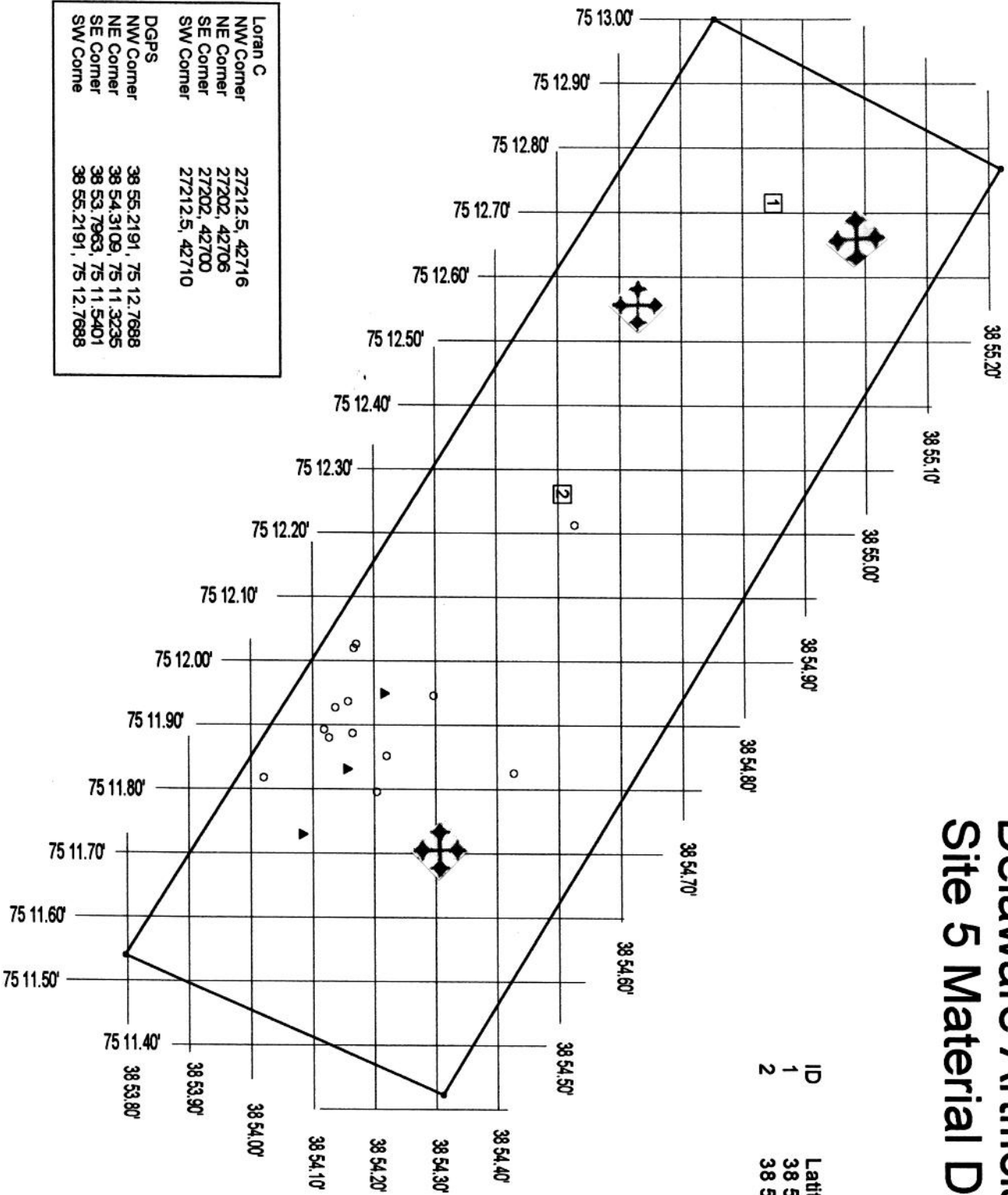
1. 91 large rectangular concrete structures deployed from a moving barge 7/6/95. Depth about 22'.
2. 1,000 tons of concrete culvert deployed on 8/17/97. Approximate depth 25'.  
N 38° 54.095'  
W 075° 11.670'
3. 997 tons of concrete culvert deployed on 7/12/00. Depth 26'.  
N 38° 54.476 – 96'  
W 075° 12.224 - 59'
4. 1,100 tons of concrete deployed on 6/11/01.  
N 38° 54.218'  
W 075° 11.952'
5. 1,300 tons of concrete deployed on 8/10/01.  
N 38° 54.092'  
W 075° 11.732'
6. 1,098 tons of concrete deployed on 7/29/02.  
N 38° 54.850'  
W 075° 12.715'
7. 1,087 tons of concrete deployed on 12/29/02.  
N 38° 54.638'  
W 075° 12.567'
8. 1,085 tons of concrete deployed on 4/25/03.  
N 38° 54.303'  
W 075° 11.684'
9. 1,588 tons of concrete deployed on 8/24/04.  
N 38° 54.983'  
W 075° 12.657'
10. 1,100 tons of concrete deployed 3/30/06.  
N 38° 54.306'  
W 075° 11.710'

---

## Notes

# Delaware Artificial Reef Site 5 Material Distribution

ID	Latitude	Longitude
1	38 54.850,	75 12.715
2	38 54.507,	75 12.261



Loran C	
NW Corner	27212.5, 42716
NE Corner	27202, 42706
SE Corner	27202, 42700
SW Corner	27212.5, 42710

DGPS	
NW Corner	38 55.2191, 75 12.7688
NE Corner	38 54.3109, 75 11.3235
SE Corner	38 53.7963, 75 11.5401
SW Corner	38 55.2191, 75 12.7688

Legend	
○	0 - 5 Units
▲	6 - 15 Units
□	> 15 Units

### Site #6

Total area of site	-	0.28 square nautical miles
Depth range	-	20-43' (mean low water)
Distance from port	-	7 nautical miles from Mispillion River 10 nautical miles from Roosevelt Inlet
Invertebrate Colonization	-	blue mussel community
Fish	-	sea bass, tautog, scup, weakfish, striped bass, bluefish

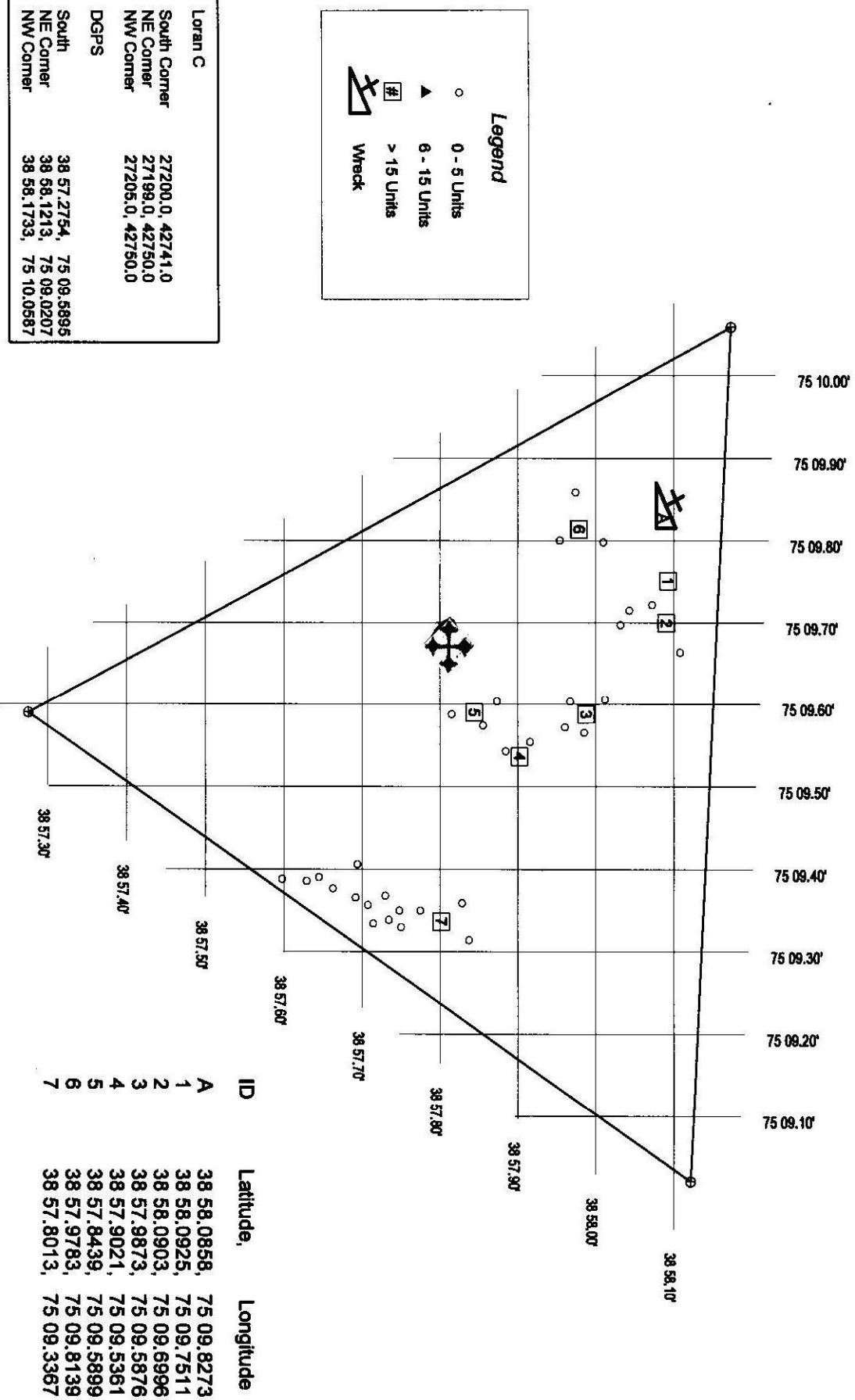
### Deployments

1. 500 tons concrete culvert deployed from a moving barge - 10/20/95.
2. 500 tons concrete culvert deployed from an anchored barge - 6/21/96.  
N 38° 57.776'  
W 075° 09.349'
3. 900 tons of concrete deployed from an anchored barge 9/25/99. Depth 39'.  
N 38° 57.814 – 877'  
W 075° 09.577 – 588'
4. 900 tons of concrete deployed from an anchored barge 11/19/99. Depth 43'.  
N 38° 57.900 – 913'  
W 075° 09.515 – 548'
5. 1,000 tons of concrete deployed on 8/9/02. Depth 41'.  
N 38° 58.108'  
W 075° 09.725'
6. 1,119 tons of concrete deployed on 4/3/03. Depth 40'.  
N 38° 57.960'  
W 075° 09.842'
7. 1,636 tons of concrete deployed on 11/02/03. Depth 40'.  
N 38° 57.988'  
W 075° 09.582'
8. 120' x 40' steel barge (Bucchannon) was deployed 3/18/04.  
N 38° 58.086'  
W 075° 09.825'
9. 1,226 tons of concrete deployed on 2/23/05.  
N 38° 57.820'  
W 075° 09.658'
10. 1,500 tons of concrete deployed on 6/25/06.  
N 38° 57.916'  
W 075° 09.655'

---

### Notes

# Delaware Artificial Reef Site 6 Material Distribution





### Site #7

Total area of site	-	0.41 square nautical miles
Depth range	-	30-40' (mean low water)
Distance from port	-	8 nautical miles from Mispillion River 9 nautical miles from Roosevelt Inlet
Invertebrate Colonization	-	blue mussel community
Fish	-	sea bass, tautog, scup, weakfish, striped bass, bluefish

### Deployments

- 500 tons of concrete culvert deployed from a moving barge 10/20/95.
- 500 tons of concrete culvert deployed from an anchored barge 5/3/96.  
N 38° 56.511'  
W 075° 08.896'
- 950 tons of concrete deployed from an anchored barge 8/12/98. Approximate depth 38'.  
N 38° 56.519' - .525'  
W 075° 08.535' - .545'
- 700 tons of concrete plus 35' and 42' steel vessels ("P3" and "Dolphin") 4/19/99. Depth 42'.  
N 38° 56.460 - 467'  
W 075° 08.508 - 537'
- 900 tons of concrete deployed from an anchored barge 7/16/99. Depth 36'.  
N 38° 56.648 - 669'  
W 075° 08.839 - 846'
- 1,100 tons of concrete deployed on 12/27/01.  
N 38° 56.500'  
W 075° 08.200'
- 1,098 tons of concrete deployed on 8/20/02. Depth 38'.  
500+ tons 500+ tons  
N 38° 56.540' N 38° 56.470'  
W 075° 08.680' W 075° 08.680'
- 1,085 tons of concrete deployed on 5/15/03.  
N 38° 56.828'  
W 075° 08.629'
- 1,697 tons of concrete deployed on 11/17/03.  
N 38° 56.653'  
W 075° 08.604'
- 1,587 tons of concrete deployed on 12/23/04.  
N 38° 56.517'  
W 075° 08.237'

---

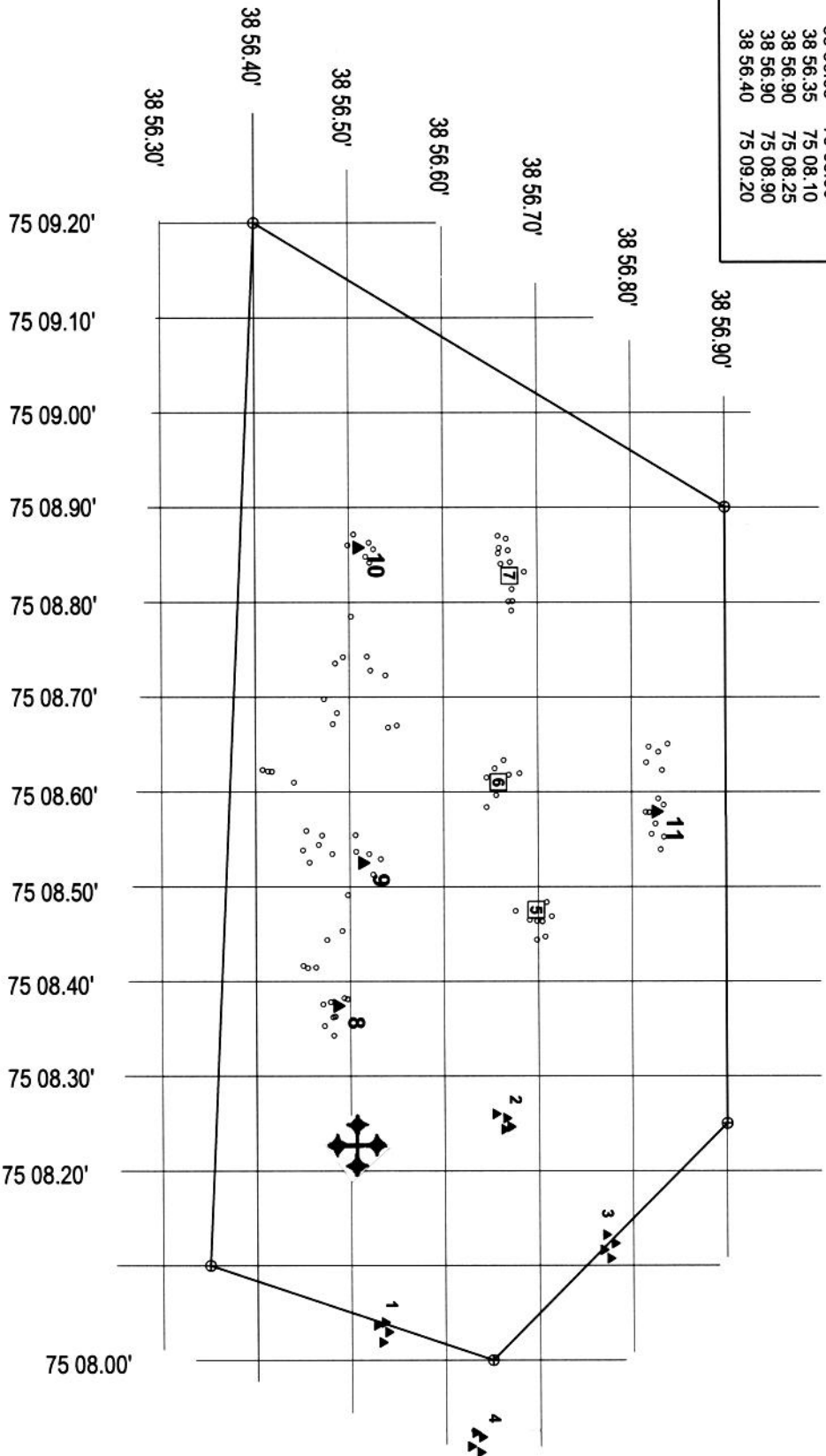
### Notes

# Delaware Artificial Reef Site 7 Material Distribution

Loran C		
East Corner	27188.5, 42733.0	
SE Corner	27189.0, 42730.0	
NE Corner	27191.5, 42736.0	
NW Corner	27195.0, 42736.0	
SW Corner	27195.0, 42730.0	
DGPS		
East Corner	38 56.65	75 08.00
SE Corner	38 56.35	75 08.10
NE Corner	38 56.90	75 08.25
NW Corner	38 56.90	75 08.90
SW Corner	38 56.40	75 09.20

Legend	
○	0 - 5 Units
▲	6 - 15 Units
□	> 15 Units

ID	Latitude	Longitude
1	38 56.542	75 08.058
2	38 56.675	75 08.275
3	38 56.772	75 08.155
4	38 56.651	75 08.938
5	38 56.698	75 08.476
6	38 56.658	75 08.610
7	38 56.671	75 08.828
8	38 56.488	75 08.374
9	38 56.515	75 08.525
10	38 56.511	75 08.857
11	38 56.828	75 08.579



### Site #8

Total area of site	-	0.96 square nautical miles
Depth range	-	29-72' (mean low water)
Distance from port	-	4.5 nautical miles from Roosevelt Inlet 8.5 nautical miles from Mispillion River
Invertebrate Colonization	-	blue mussel community
Fish	-	tautog, seabass, scup, weakfish, striped bass, bluefish

### Deployments

1. 550 tons of donated concrete and steel material donated by STAR Enterprise deployed from a moving barge 3/1/95.
2. 500 tons of concrete culvert deployed from a moving barge 8/25/95.
3. 980 tons of donated concrete and steel material donated by STAR Enterprise deployed from an anchored barge 1/23/96.  
N 38° 51.892'  
W 075° 08.054'
4. 70' commercial tugboat "Golden Eagle" sunk 8/96 at  
N 38° 52.080'  
W 075° 08.094'
5. 800 tons of concrete deployed from an anchored barge 6/18/98. Approximate depth 28'.  
N 75° 08.491' - .495'  
W 038° 51.887' - .892'
6. 800 tons of concrete deployed from an anchored barge 6/5/99. Depth 41'.  
N. 38° 51.948 - 963'  
W 075. 08.184 - 193'
7. 935 tons of concrete deployed from an anchored barge 7/8/99. Depth 37'.  
N 38° 52.157 - 168'  
W 075° 08.400 - 418'
8. 1,000 tons of concrete deployed on 4/24/01.  
N 38° 52.100'  
W 075° 08.800'
9. 1,010 tons of concrete deployed on 9/13/02. Depth 32'.  
N 38° 52.176 - 261'  
W 075° 09.024 - 102'
10. 1,000 tons of concrete deployed on 12/13/02. Depth 30'.  
N 38° 52.066'  
W 075° 08.663'
11. 1,138 tons of concrete deployed on 5/21/03.  
N 38° 51.749'  
W 075° 08.191'
12. 1,091 tons of concrete deployed on 8/7/03.  
N 38° 52.356'  
W 075° 09.350'

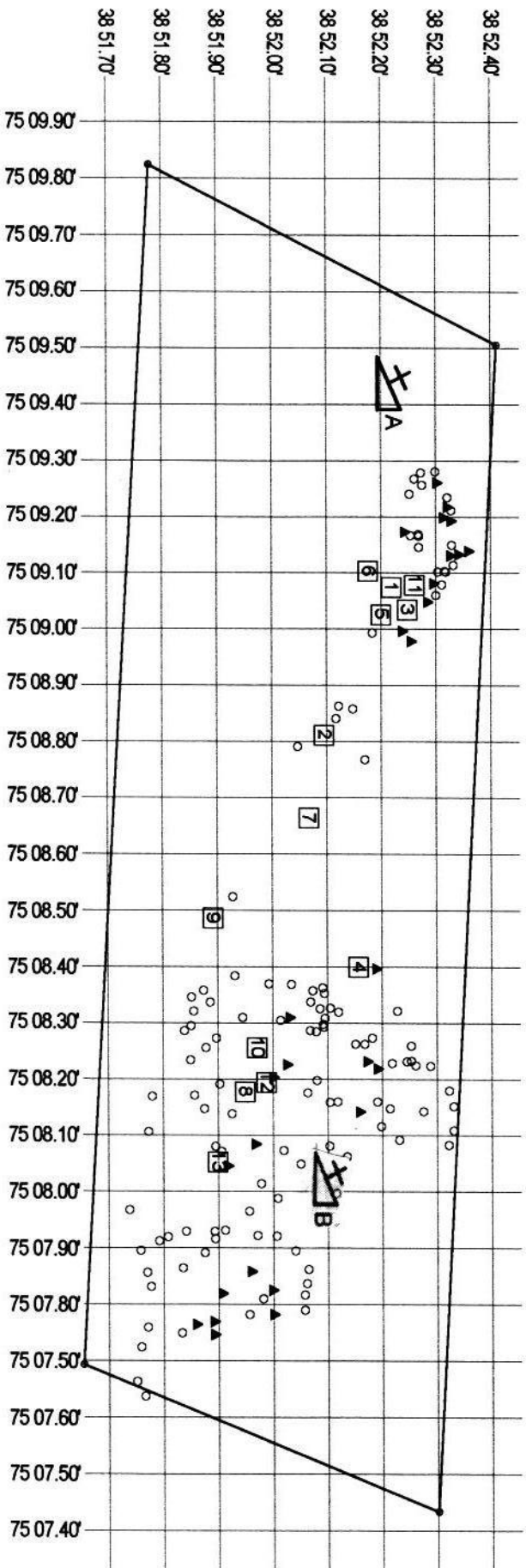
---

### Notes

# Delaware Artificial Reef Site 8 Material Distribution

Loran C	
NW Corner	27187, 42885
NE Corner	27175, 42885
SE Corner	27175, 42678
SW Corner	27187, 42678
DGPS	
NW Corner	38 52.4108, 75 09.5059
NE Corner	38 52.3011, 75 07.4332
SE Corner	38 51.6536, 75 07.6930
SW Corner	38 51.7775, 75 09.8236

Legend	
○	0 - 5 Units
▲	6 - 15 Units
□	> 15 Units
⚓	Wreck



ID	Latitude	Longitude
A	38 52.215,	75 09.436
B	38 52.082,	75 08.107
1	38 52.220,	75 09.070
2	38 52.095,	75 08.811
3	38 52.247,	75 09.033
4	38 52.156,	75 08.399
5	38 52.200,	75 09.024
6	38 52.176,	75 09.102
7	38 52.066,	75 08.663
8	38 51.948,	75 08.176
9	38 51.891,	75 08.485
10	38 51.971,	75 08.255
11	38 52.261,	75 09.077
12	38 51.988,	75 08.193
13	38 51.899,	75 08.051

### Site #9

Total area of site	-	0.63 square nautical miles
Depth range	-	52-63' (mean low water)
Distance from port	-	12 nautical miles from Roosevelt Inlet 4.5 nautical miles from Indian River Inlet
Invertebrate Colonization	-	blue mussel community
Fish	-	tautog, seabass, scup, weakfish, bluefish, striped bass

### Deployments

1. 500 tons of concrete culvert - deployed from a moving barge 8/25/95.
2. 1000 tons of concrete culvert and stabilized tires deployed on 4/15/97 near  
N 38° 40.235'  
W 074° 59.718'
3. 900 tons of stabilized tires deployed on 6/26/97. Approximate depth 60'.  
N 38° 40.062' - .081'  
W 074° 59.561' - .581'
4. 800 tons of concrete culvert and stabilized tire units deployed on 7/31/98. Approximate depth 58'.  
N 38° 40.151'  
W 074° 59.588'
5. 500 tons of cement mixer drums deployed 7/6/01  
N 38° 40.351'  
W 074° 59.655'
6. 1,100 tons of concrete deployed 6/24/03. Depth 62'.  
N 38° 40.231'  
W 074° 59.541'
7. 1,093 tons of concrete deployed 8/21/03. Depth 60'.  
N 38° 40.277'  
W 075° 00.214'

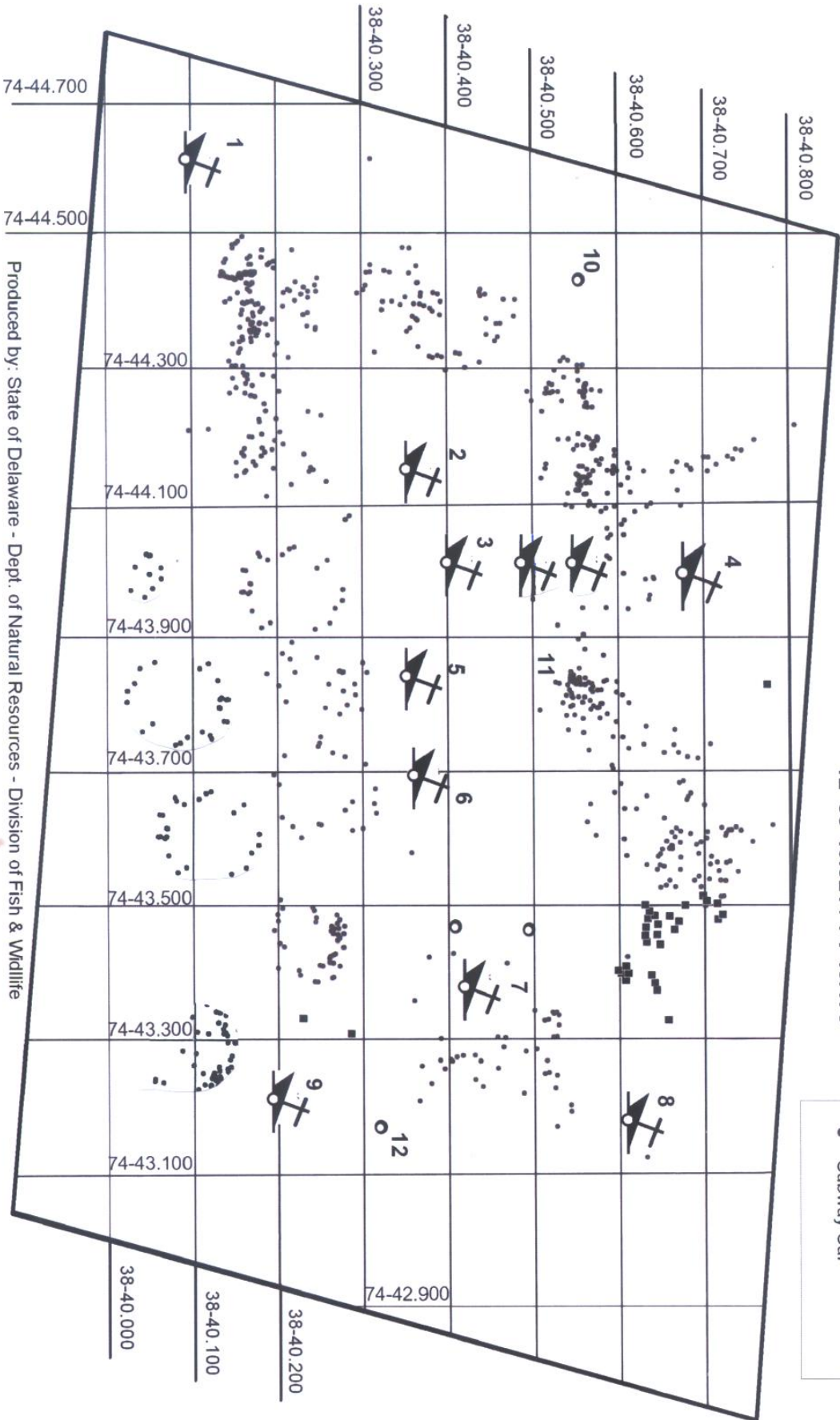
---

### Notes

# Delaware Artificial Reef Red Bird Reef Material Distribution

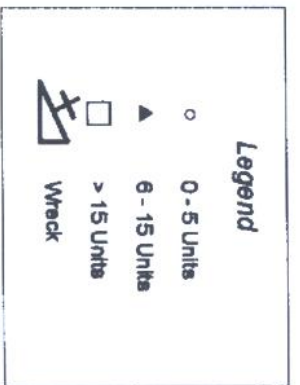
- |   |                       |    |                       |
|---|-----------------------|----|-----------------------|
| 1 | 38-40.411 / 74-43.686 | 6  | 38-40.378 / 74-43.686 |
| 2 | 38-40.369 / 74-44.142 | 7  | 38-40.434 / 74-43.377 |
| 3 | 38-40.413 / 74-44.007 | 8  | 38-40.619 / 74-43.176 |
| 4 | 38-40.689 / 74-43.986 | 9  | 38-40.209 / 74-43.198 |
| 5 | 38-40.369 / 74-43.834 | 10 | 38-40.550 / 74-44.434 |
|   |                       | 11 | 38-40.560 / 74-43.812 |
|   |                       | 12 | 38-40.321 / 74-43.175 |

- Military Track Vehicle
- ▲ Shipwreck
- Tire Units
- Subway Car

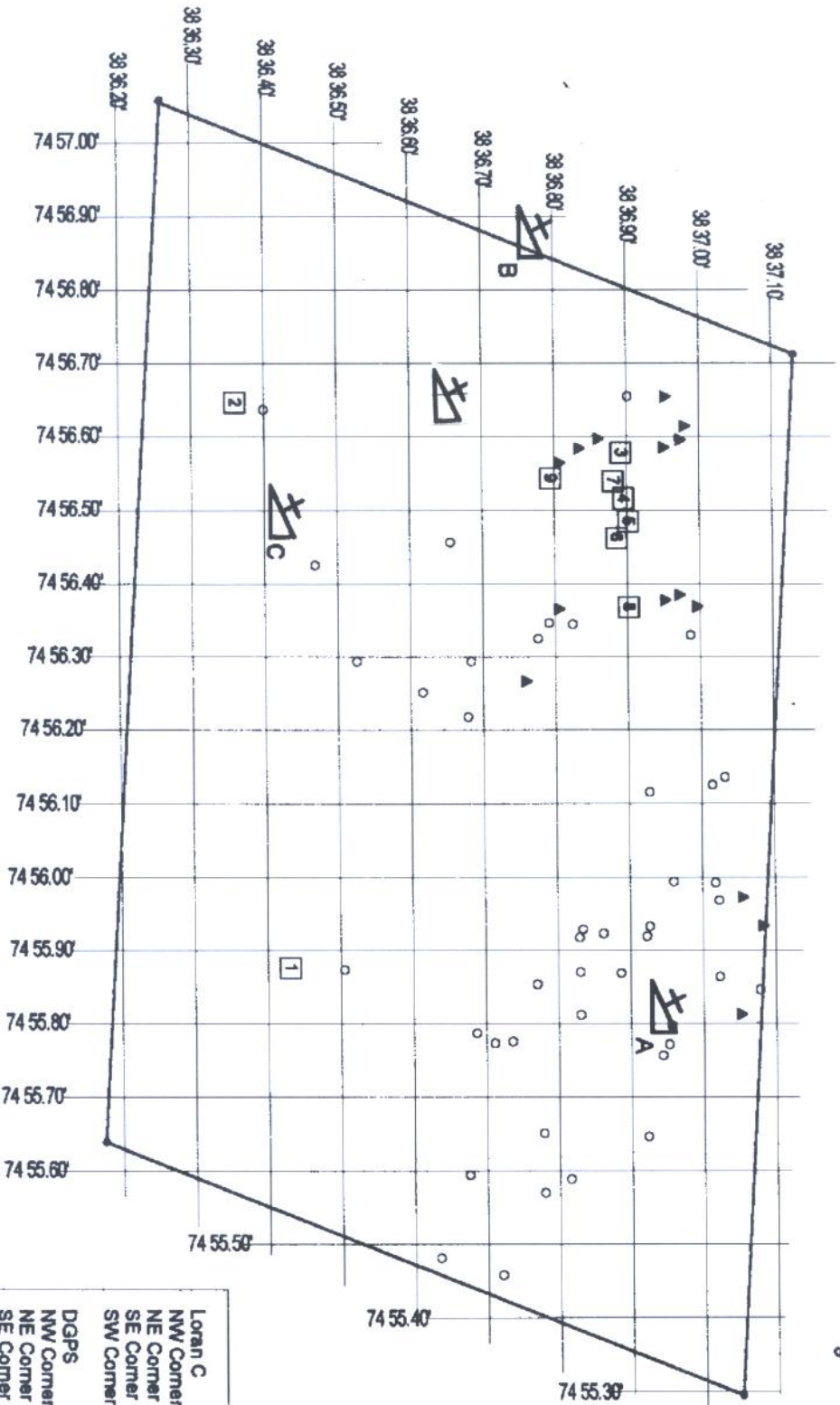




# Delaware Artificial Reef Site 10 Material Distribution



ID	Latitude	Longitude
A	38 36.943,	74 55.819
B	38 36.769,	74 56.878
C	38 36.424,	74 56.498
1	38 36.430,	74 55.876
2	38 36.359,	74 56.646
3	38 36.891,	74 56.577
4	38 36.894,	74 56.515
5	38 36.901,	74 56.484
6	38 36.884,	74 56.462
7	38 36.880,	74 56.539
8	38 36.901,	74 56.367
9	38 36.794,	74 56.542



Loran C	
NW Corner	27080, 42520
NE Corner	27072, 42520
SE Corner	27072, 42510
SW Corner	27080, 42510
DGPS	
NW Corner	38 37.1300, 74 56.7113
NE Corner	38 37.0462, 74 56.2940
SE Corner	38 36.1749, 74 55.6392
SW Corner	38 36.1749, 74 55.6392

**Site #10**

Total area of site	-	0.69 square nautical miles
Depth range	-	56-66' (mean low water)
Distance from port	-	5.5 nautical miles from Indian River Inlet
Invertebrate Colonization	-	blue mussel community
Fish	-	sea bass, tautog, scup, weakfish, bluefish

**Deployments**

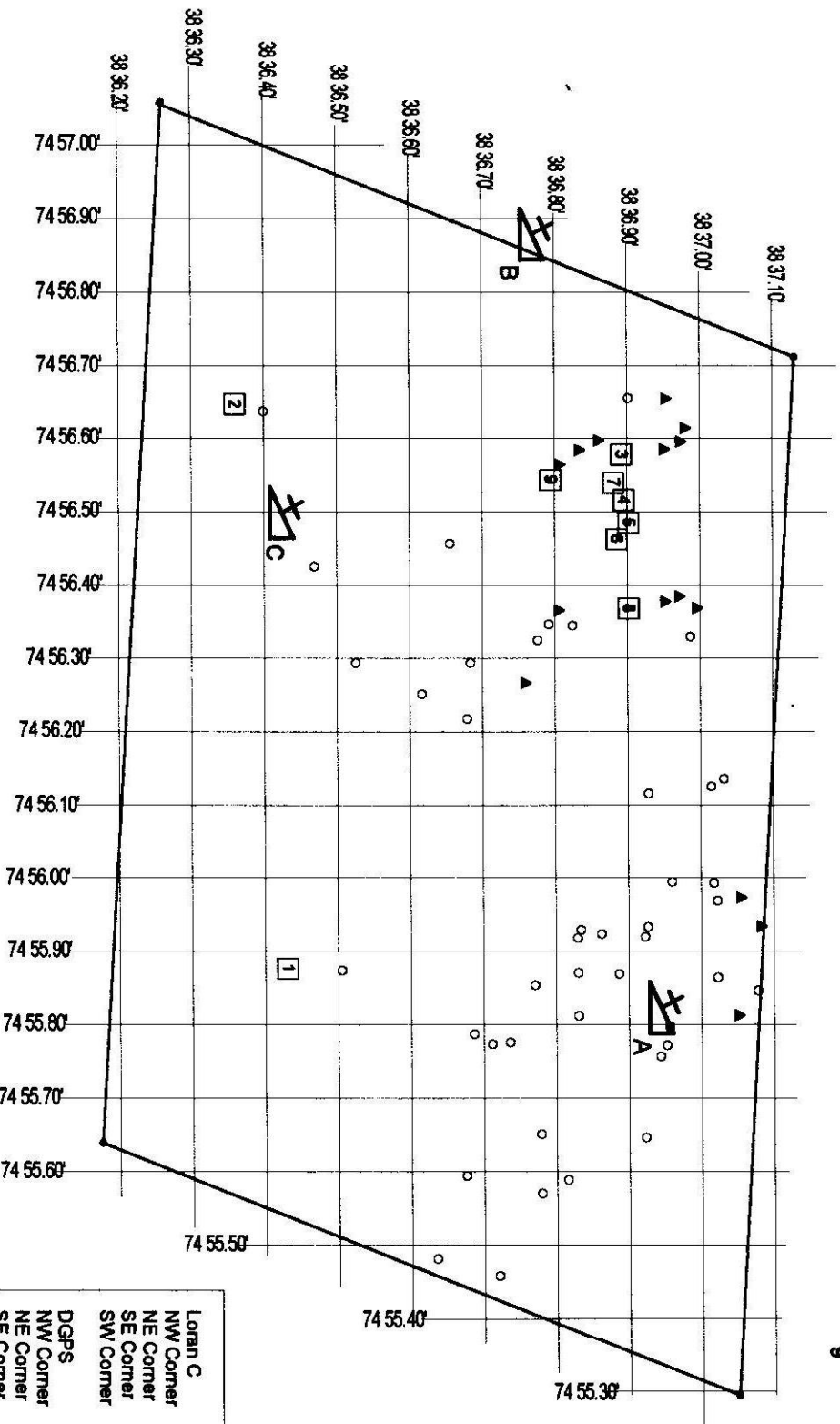
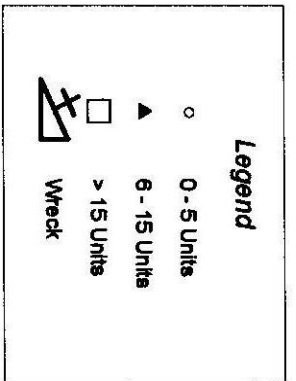
1. Previously existing wreck (barge?)  
N 38° 36.934'  
W 074° 55.821'
2. 1000 tons of concrete culvert and stabilized tire units deployed from a moving barge 8/25/95.
3. 1000 tons of stabilized tire units deployed from a moving barge 11/18/95.
4. 1000 tons of concrete culvert and stabilized tire units deployed from an anchored barge 8/5/96.  
N 38° 36.890'  
W 074° 56.454'
5. 850 tons of ballasted tire units on 3/31/98. Approximate depth 60'.
6. 850 tons of concrete culvert and stabilized tire units deployed on 5/19/98. Approximate depth 61'.  
N 38° 36.365'  
W 074° 56.600'
7. 875 tons of ballasted tire units deployed from an anchored barge 8/19/99. Depth 64'.  
N 38° 36.432 – 434'  
W 074° 55.871 – 874'
8. Yon 80 Navy barge sunk 6/18/02. Depth 62'.  
N 38° 36.424'  
W 074° 56.498'
9. 1,190 tons of concrete deployed 11/20/02. Depth 60'.  
N 38° 36.589'  
W 074° 56.469'
10. 5.6 nautical miles of marine cable deployed 5/11/03. Depth 62'.  
N 38° 36.750'  
W 074° 55.670'
11. 1,072 tons of concrete deployed 7/9/03.  
N 38° 36.738'  
W 074° 55.965'
12. 1,039 tons of concrete deployed 7/26/03.  
N 38° 36.857'  
W 074° 56.161'
13. "Mr. G" and "Rusty Pusher" (small tug and push boat) 3/4/09  
N 38° 36.649'  
W 074° 56.646'

---

**Notes**



# Delaware Artificial Reef Site 10 Material Distribution



ID	Latitude,	Longitude
A	38 36.943,	74 55.819
B	38 36.769,	74 56.878
C	38 36.424,	74 56.498
1	38 36.430,	74 55.876
2	38 36.359,	74 56.646
3	38 36.891,	74 56.577
4	38 36.894,	74 56.515
5	38 36.901,	74 56.484
6	38 36.884,	74 56.462
7	38 36.880,	74 56.539
8	38 36.901,	74 56.367
9	38 36.794,	74 56.542

Loran C	
NW Corner	27080, 42520
NE Corner	27072, 42520
SE Corner	27072, 42510
SW Corner	27080, 42510
DGPS	
NW Corner	38 37.1300, 74 56.7113
NE Corner	38 37.0492, 74 55.2940
SE Corner	38 36.1749, 74 55.6392
SW Corner	38 36.1749, 74 55.6392

### Site 11

Total area of site	-	1.3 square nautical miles
Depth range	-	68-88' (mean low water)
Distance from port	-	16.5 nautical miles from Indian River Inlet
Invertebrate Colonization	-	blue mussel community, northern coral community
Fish	-	sea bass, tautog, flounder, scup

### Deployments

- 26 military track vehicles deployed in 3 tightly grouped clusters 1/96.  
A. N38° 40.702' W 074°43.531' B. N38° 40.703' W 074°43.518' C. N38° 40.718' W 074° 43.550'
- 40 military vehicles deployed in clusters.  
A (7 vehicles) N38°40.648'; W074°43.535' B (13 vehicles) N38°40.561'-.576'; W074°43.487'-.511'  
C (9 vehicles) N38°40.618' -.641'; W074°43.374 -.379' D (11 vehicles) N38°40.624' -.635'; W074°43.430'-.448'
- 850 tons of ballasted off road tire units deployed 7/24/98. depth 90', N38° 40.389'- 415'; W074° 43.433'-.453'
- 90' commercial tug "Delilah" sunk 1/15/99, N38° 40.433'; W074° 43.386'
- 1,100 tons ballasted tires deployed from a moving barge 2/11/99, N38° 40.490' -530'; W074° 43.450 -500'
7. YC 1479 (160' Navy barge) sunk 10/20/00, N38° 40.365'; W074° 43.818'
- 90' Commercial tug "Margie Ann" sunk 6/19/01. Depth 90', N38° 40.322'; W074° 44.132'

### Subway cars

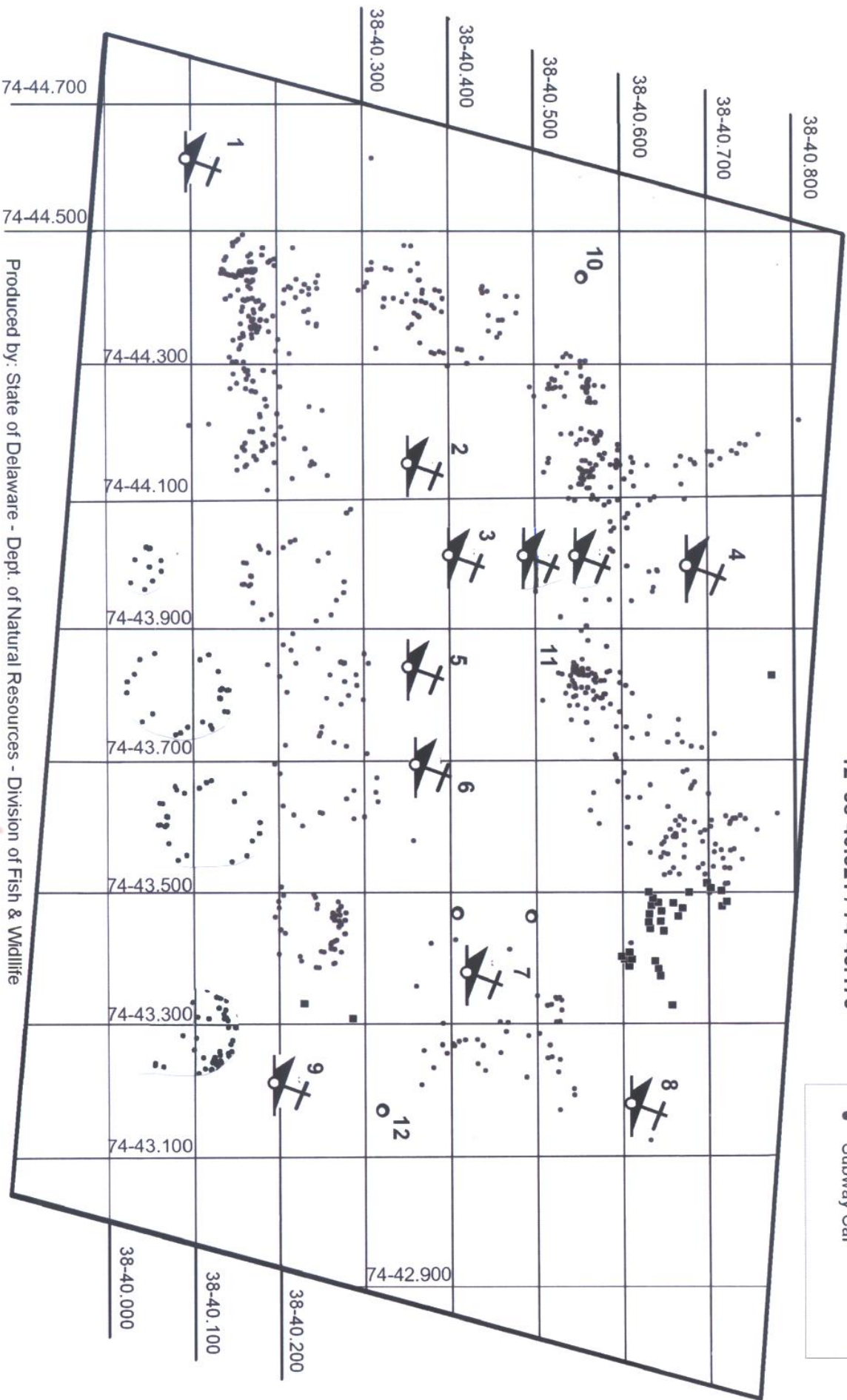
There are 714 subway cars on the site which can easily be found using this chart and your fathometer. The following coordinates are the densest concentrations identified by the sidescans sonar contractor:

- N 38° 40.688'; W 074° 43.576'
- N 38° 40.567'; W 074° 43.805'
- N 38° 40.534'; W 074° 44.272'
- N 38° 40.200'; W 074° 44.401'
- N 38° 40.218'; W 074° 43.862'
- N 38° 40.263'; W 074° 43.468'
- N 38° 40.372'; W 074° 44.389'
15. Margaret 85' tug sunk 6/28/07 Depth 88' N 38° 40.361'; W 074° 43.672'
- William C. Snow 55' tug sunk 6/2/08 Depth 84' N 38° 40.105'; W 074° 44.600'
- Fels Points 110' tug sunk 6/2/08 Depth 77' N 38° 40.212'; W 074° 43.196'
- Cittie Point 95' tug sunk 6/2/08 Dept 81' N 38° 40.624'; W 074° 43.173'
- Bay Tide 110' tug sunk 1/30/09 38° 40. 54' N; 074° 43.957' W
- Crazy Horse 77' trawler sunk 1/30/09 38° 40. 490' N; 074° 43.957' W

# Delaware Artificial Reef Red Bird Reef Material Distribution

- 1 38-40.411 / 74-43.686
- 2 38-40.369 / 74-44.142
- 3 38-40.413 / 74-44.007
- 4 38-40.689 / 74-43.986
- 5 38-40.369 / 74-43.834
- 6 38-40.378 / 74-43.686
- 7 38-40.434 / 74.43.377
- 8 38-40.619 / 74-43.176
- 9 38-40.209 / 74-43.198
- 10 38-40.550 / 74-44.434
- 11 38-40.560 / 74-43.812
- 12 38-40.321 / 74-43.175

- Military Track Vehicle
- ✈ Shipwreck
- Tire Units
- Subway Car



Produced by: State of Delaware - Dept. of Natural Resources - Division of Fish & Wildlife

DEL-JERSEY-LAND INSHORE SITE

Total area of site - 1.00 square nautical miles  
Depth range - 121-131'  
Distance from port - 26 NW from Indian River Inlet  
30 NW from Cape May, NJ Inlet  
30 NW from Ocean City, MD Inlet  
Invertebrate Colonization - Northern coral, Whip coral, Anemone community  
Fish - black sea bass, ocean pout, winter flounder, red hake, bluefish,  
Bluefin tuna, shark

Gregory Poole 175' Minesweeper/Menhaden harvesting  
vessel (see front cover) sunk 12/2/2007  
38° 30. 910' N  
074° 30. 597' W

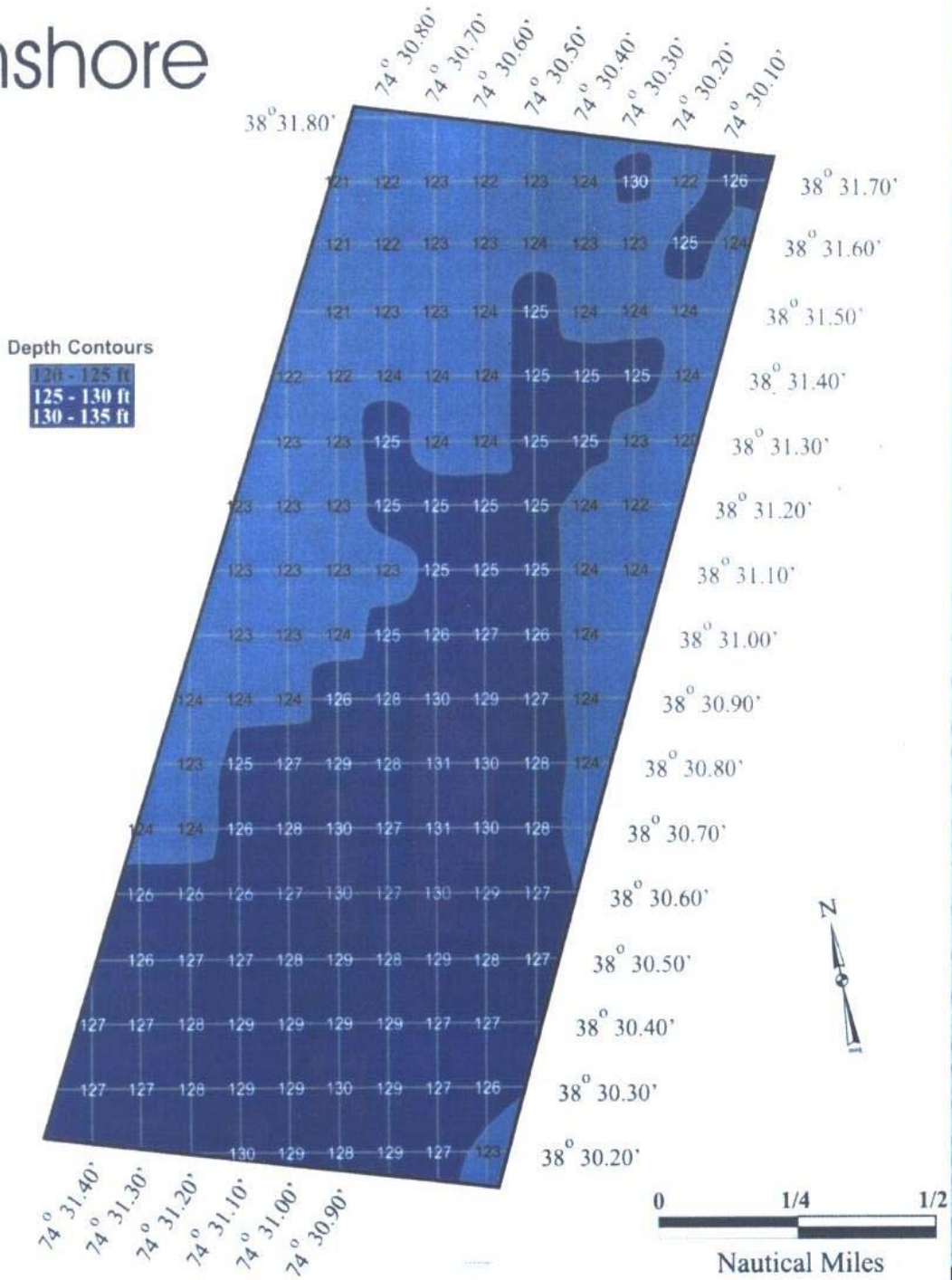
Scattered subway cars in the vicinity of the following coordinates:

44 cars 38° 31.600' N  
074° 30.600' N 8/2/09  
44 cars 38° 31.600' N  
074° 30.400' W 8/30/09  
44 cars 38° 31.500' N  
074° 30.800' W 9/30/09  
44 cars 38° 31.600' N  
074° 30.800' W 9/12/09



# Del-Jerseyland

## Inshore





STATE OF DELAWARE  
DEPARTMENT OF NATURAL RESOURCES  
& ENVIRONMENTAL CONTROL  
DIVISION OF FISH & WILDLIFE  
FISHERIES BUILDING  
3002 Bayside Drive  
Dover, Delaware 19901

4050203 FW FISHERIES